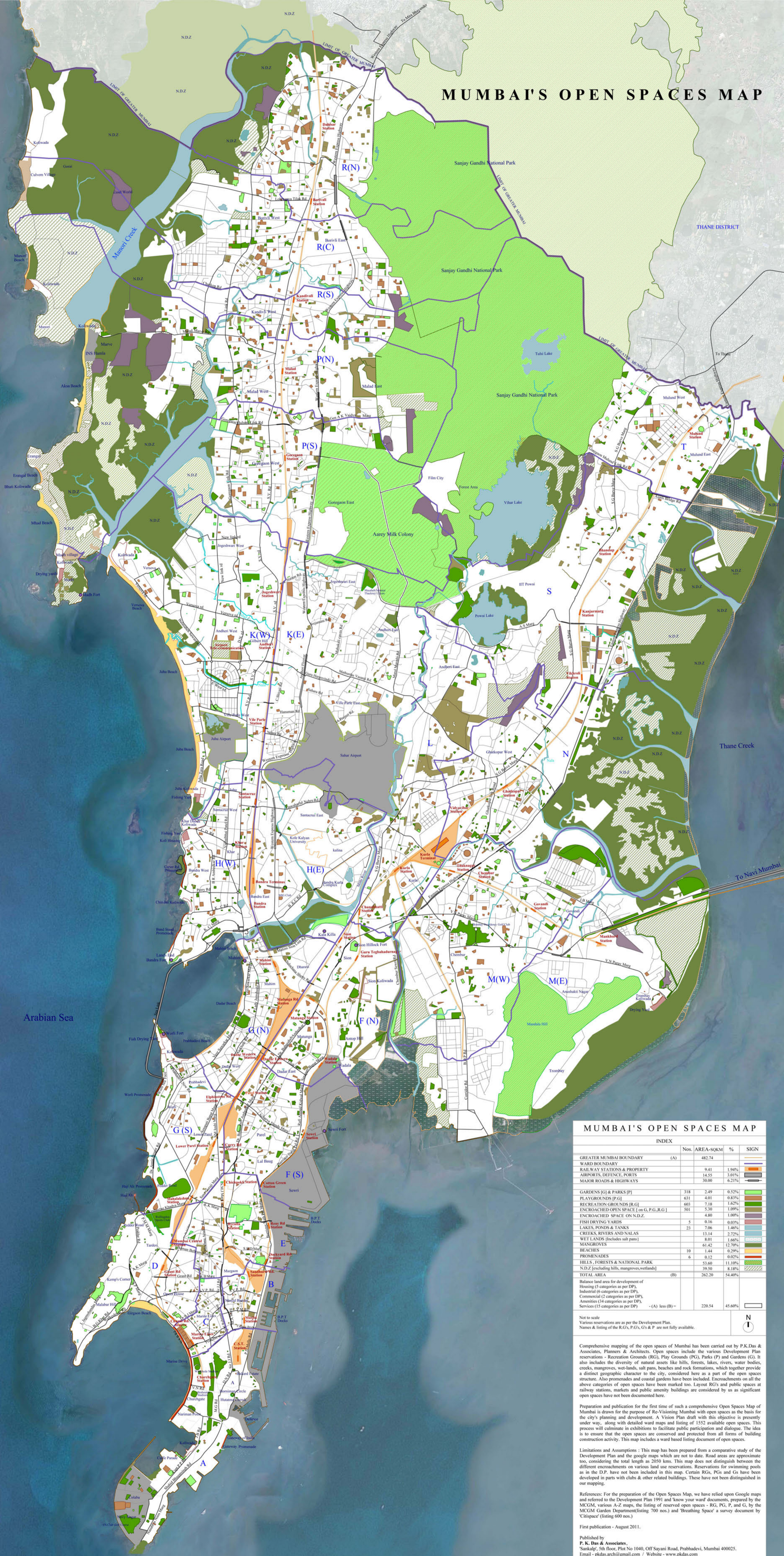


# MUMBAI'S OPEN SPACES MAP



## MUMBAI'S OPEN SPACES MAP

INDEX				
	Nos.	AREA-SQKM	%	SIGN
GREATER MUMBAI BOUNDARY	(A)	482.74		
WARD BOUNDARY				
RAILWAY STATIONS & PROPERTY		9.41	1.94%	
AIRPORTS, DEFENCE, PORTS		14.55	3.01%	
MAJOR ROADS & HIGHWAYS		30.00	6.21%	
GARDENS [G] & PARKS [P]	318	2.49	0.52%	
PLAYGROUNDS [P.G.]	631	4.01	0.83%	
RECREATION GROUNDS [R.G.]	663	7.18	1.48%	
ENCROACHED OPEN SPACE [on G, P.G., R.G.]	501	3.30	0.69%	
ENCROACHED SPACE ON N.D.Z.		4.80	1.00%	
FISH DRYING YARDS	5	0.16	0.03%	
LAKES, PONDS & TANKS	23	7.06	1.46%	
CREEKS, RIVERS AND NALAS		13.14	2.72%	
WET LANDS [includes salt pans]		8.01	1.66%	
MANGROVES		61.42	12.70%	
BEACHES	10	1.44	0.29%	
PROMENADES	6	0.12	0.02%	
HILLS, FORESTS & NATIONAL PARK		53.60	11.10%	
N.D.Z. [excluding hills, mangroves, wetlands]		39.50	8.18%	
TOTAL AREA	(B)	262.20	54.40%	
Balance land area for development of Housing (5 categories as per DP), Industrial (6 categories as per DP), Commercial (2 categories as per DP), Amenities (14 categories as per DP), Services (15 categories as per DP)	(A) less (B) =	220.54	45.60%	

Not to scale  
 Various reservations are as per the Development Plan.  
 Names & listing of the R.G.s, P.G.s, G.s & P are not fully available.

Comprehensive mapping of the open spaces of Mumbai has been carried out by P.K.Das & Associates, Planners & Architects. Open spaces include the various Development Plan reservations - Recreation Grounds (R.G.), Play Grounds (P.G.), Parks (P) and Gardens (G). It also includes the diversity of natural assets like hills, forests, lakes, rivers, water bodies, creeks, mangroves, wet-lands, salt pans, beaches and rock formations, which together provide a distinct geographic character to the city, considered here as a part of the open spaces structure. Also promenades and coastal gardens have been included. Encroachments on all the above categories of open spaces have been marked too. Layout R.G.s and public spaces at railway stations, markets and public amenity buildings are considered by us as significant open spaces have not been documented here.

Preparation and publication for the first time of such a comprehensive Open Spaces Map of Mumbai is drawn for the purpose of Re-Visioning Mumbai with open spaces as the basis for the city's planning and development. A Vision Plan draft with this objective is presently under way, along with detailed ward maps and listing of 1552 available open spaces. This process will culminate in exhibitions to facilitate public participation and dialogue. The idea is to ensure that the open spaces are conserved and protected from all forms of building construction activity. This map includes a ward based listing document of open spaces.

Limitations and Assumptions : This map has been prepared from a comparative study of the Development Plan and the google maps which are not to date. Road areas are approximate too, considering the total length as 2050 kms. This map does not distinguish between the different encroachments on various land use reservations. Reservations for swimming pools as in the D.P. have not been included in this map. Certain R.G.s, P.G.s and G.s have been developed in parts with clubs & other related buildings. These have not been distinguished in our mapping.

References: For the preparation of the Open Spaces Map, we have relied upon Google maps and referred to the Development Plan 1991 and 'know your ward' documents, prepared by the MCGM, various A-Z maps, the listing of reserved open spaces - R.G., P.G., P, and G, by the MCGM Garden Department (listing 700 nos.) and 'Breathing Space' a survey document by 'Cityspace' (listing 600 nos.).

First publication - August 2011.

Published by  
**P. K. Das & Associates,**  
 'Sankalp', 5th floor, Plot No 1040, Off Sayani Road, Prabhadevi, Mumbai 400025.  
 Email - pkdas.arch@gmail.com / Website - www.pkdas.com

Printing Sponsor- Vijaynath Roofs www.vijaynathbuildingproducts.com